

An aerial photograph of a tropical beach. At the top, a row of white, curved canopies is spaced out along a sandy shore. Behind the canopies is a dense line of green tropical trees and palm trees. The water is a vibrant turquoise color, showing a clear view of the seabed with various coral reefs and patches of darker green vegetation. A small yellow kayak is visible in the lower part of the water. The text 'TRADE FACTSHEET at Bawah Reserve' is overlaid on the right side of the image.

TRADE
FACTSHEET
at Bawah Reserve



Bawah
RESERVE



Bawah Reserve is a sustainable resort offering a spectacular private island experience in Indonesia's remote Anambas archipelago.

Our earth-first philosophy guides everything we do; it's why we established a come-as-you-are, relaxed environment built upon the tenets of authenticity, excellent service and respect for our islands' natural wonders.

Daily rates include spa treatments, island activities (both on land and sea) and the exquisite cuisine made from ingredients grown in Bawah's own gardens. With six islands, three lagoons, 13 beaches and 100 hectares of untouched forest, guests have their own natural playground to explore.

The resort at a glance

- 6 islands
- 3 marine reserve lagoons
- 13 private beaches
- 100 hectares of primary forest
- 2 restaurants
- 2 bars / casual dining
- Infinity swimming pool
- Wallace Library
- Activities lawn
- Resort boutique (Six Islands Trading Post)
- Aura Spa & Wellbeing
- Air-conditioned gym and Jungle gym
- Hiking trails
- Countless water activities
- Architecture walks
- Permaculture gardens and tours
- Classes & workshops
- Island-wide WiFi
- Foundation and conservation education
- Endless bespoke experiences



JOURNEY

Bawah Reserve lies 160 miles northeast of Singapore in Indonesian waters. The journey to the resort can start either in Singapore or Batam, Indonesia.

Singapore

Guests are picked up from the airport, a hotel or a private residence – by Bawah’s preferred, outsourced car service and driven to Tanah Merah Ferry Terminal. From there, Bawah’s travel host escorts guests on a 30-minute ferry ride to the Indonesian island of Batam. On arrival, guests are driven to Batam airport where they board Bawah’s amphibious seaplane for an 80-minute flight, landing on the water in the resort’s main lagoon.

Batam

Guests are picked up via private car service from their hotel or residence in Batam. Guests may opt to fly directly into the Hang Nadim Airport (BTH) where they will be met upon arrival for direct transfer to Bawah’s amphibious seaplane.

Private jet

Guests wishing to travel to Bawah Reserve via private jet should plan to fly directly into the Hang Nadim Airport (BTH) for direct transfer to Bawah’s amphibious seaplane.

Private yacht

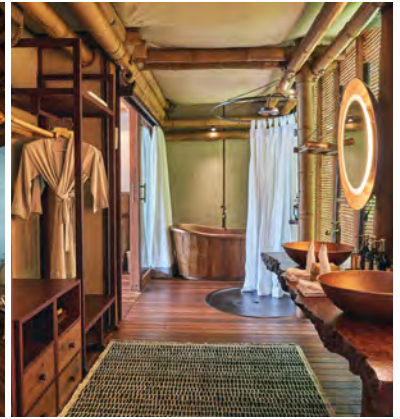
We welcome guests to Bawah Reserve who are travelling via private yacht. Reservations are required for mooring and there are size limitations within our lagoons.



Good to know

- **Journey from Singapore:**
Approximately 4 hours
- **Journey from Batam:**
Approximately 3 hours
- 80-minute amphibious seaplane flight
- Up to 2 seaplane flights per day, 6 days per week
- Baggage allowance is strictly limited to 15 KG (incl. hand luggage) due to seaplane weight restrictions. Excess luggage may be stored
- An overnight stay in [Singapore](#) or [Batam](#) is recommended before your trip due to our early pick up times





SLEEP

Bawah Reserve's 36 earth conscious stand-alone suites are enveloped by nature. Every detail—from the crisp bed linen on our canopy beds, to the copper bathtubs are designed to make guests feel at home.

3 Garden Suites 70m²

Located behind the beach suites surrounded in lush greenery.

15 Beach Suites 70m²

Bamboo tented beach suites lining the southern coast of the Reserve with direct beach access.

11 Overwater Bungalows 105m²

Built over the shallow turquoise lagoon waters; well appointed for a spectacular panorama of the archipelago.

1 Two-bed Jungle Lodge 140m²

Offering one king and one twin bedroom, ensuite bathrooms, attic den, dining and lounge area and sea views from an expansive veranda surrounded by trees.

2 Two-bed Pool Villas 200m²

Beachfront pool villa with two adjoining suites with ensuite bathrooms (one king, one twin), separate covered dining and lounge pavilion, pool and direct access to the beach.

2 Three-bed Pool Villas 310m²

Option to add interconnected suite via a covered walkway. The third ensuite bedroom is a standalone beach suite, separate but connected to the main villa.

2 Two-bed Infinity Pool Villas 203m²

Beachfront pool villa with two separate, standalone suites with ensuite bathrooms (two kings), connected covered dining and lounge pavilion, infinity pool and direct access to the beach.

1 Four-bed Infinity Pool Villa 750m²

Option to add interconnected villa via a covered walkway. Offering four king or twin bedroom suites with ensuite bathrooms, two central dining and lounge pavilions and two plunge pools with sea views. Perfect for families or groups travelling together but also looking for individual privacy.

Rates in USD (per night)

Garden Suite	\$1780	2-bed Pool Villa	\$4980
Beach Suite.....	\$2080	3-bed Pool Villa	\$6650
Overwater Bungalow	\$2520	2-bed Infinity Pool Villa	\$4580
Jungle Lodge	\$3480	4-bed Infinity Pool Villa	\$9160

* Peak season rates apply * Occupancy based on two adults per room. Extra bed per suite, per night: Adult \$600, child (5-12 yrs) \$450
 * Minimum 3 night stay



Package

Suite inclusions

- Air-conditioned canopied bed with a ceiling fan
- Bath, rain shower, twin sinks
- Minibar with coffee, tea, still and sparkling mineral water and Bawah snacks
- Private covered veranda
- Safe, bathrobes, slippers
- Beach bag, beach towels, sun hats
- Snorkel equipment
- Mobile phone linked to resort's staff
- Natural toiletries and insect repellent
- Hairdryer
- Twice-daily room cleaning and turndown service

Package inclusions

- Daily breakfast, lunch, dinner
- Non-alcoholic beverages
- Yoga, Pilates and meditation classes
- One spa treatment pp/per night
- Water and land activities
- Laundry service
- Resort-wide WiFi
- Room tax and service charges

Exclusions

- Alcoholic beverages
- Diving
- Bespoke experiences
- \$700 USD transport package per person for 2021; \$750 USD transport package per person for 2022 onward

ACCOMMODATION FLOORPLANS

Garden Suite



Beach Suite



Overwater Bungalow



Jungle Lodge



ACCOMMODATION FLOORPLANS

Two-bed Pool Villa



Two-bed Infinity Pool Villa



Interconnected Three-bed and/or Four-bed Pool Villa



TASTE

The Reserve offers two restaurants, two bars and endless private dining experiences across its six islands, from the sea to the trees.

Tree Tops

Refined continental and Indonesian cuisine served amongst the rainforest canopy.



The Boat House

Delectable local seafood with a sand-between-your-toes experience and ocean views from every table.



The Grouper

The heart of the island and all-day meeting spot for coffee, light bites and cocktails overlooking the ocean and the infinity pool.



Jules Verne

A hideaway at the resort summit for garden-to-glass bespoke cocktails and post-dinner drinks.



BALANCE

Aura Spa & Wellbeing

Offering traditional spa therapies designed to relax, invigorate and rejuvenate. All-natural ingredients and handmade scrubs complement every spa ritual. Daily movement classes are designed to bring true balance to your body, mind and soul. Scheduled group classes and one daily spa treatment are included in the rates.



The Wallace Library

A quiet sanctuary with books and games to be enjoyed in a tranquil setting. Situated above Tree Tops restaurant, guests can enjoy sunset views of the main lagoon.



BROWSE

Six Islands Trading Post

Bawah Reserve's island boutique offers resort clothing, local giftware and holiday essentials. In line with Bawah's values, most brands are locally and sustainably sourced.



PLAY

Bawah Reserve offers unique experiences to help guests enjoy the natural surroundings, whether they want to explore the islands by foot or by boat, get pampered at Aura Spa or dive into adventurous marine activities.

Click here to view [Activities Discovery Book](#)

Above

- Infinity swimming pool
- Boat and yacht trips
- Daily movement classes
- Forest hiking trails
- Stargazing
- The Wallace library
- Starlight cinema nights
- Weekly beach BBQs
- Permaculture gardens and tours
- Architecture walks
- Indonesian cooking classes
- Art classes
- Batik making

Below

- Kayaking and guided kayak excursions
- Stand-up Paddleboarding
- Catamaran Sailing
- Guided and unguided lagoon snorkelling
- Scuba diving and Padi courses



Beyond

- Spa Explorer experiences on a private island
- Castaway picnics on private beaches
- Private dining across the Reserve
- Accredited Marine Conservation Area and education
- Anambas Foundation day trips to neighbouring islands



RESORT OUTDOOR ACTIVITIES MAP



Activity Key

	Dive Sites		Snorkel Trails
	Hiking Trails		Paddleboard & Kayak Trails
	Orange		Red
	Green		Blue
	Blue		Yellow
	Turquoise		13 beaches
	Yellow		
	Black		

Points of Interest

- Jules Verne Bar
- Main Lookout
- Behind Water Suites West
- Sunset View
- Coconut Lagoon Lookout
- Coconut Beach
- North East Lookout
- Turtle Beach
- Seaplane Lagoon
- Boat Lagoon
- Coconut Lagoon

Beaches

- Bawah
- Boat House
- East
- Tokong
- Coconut
- Setigi
- Lidi
- Elang
- Emperor
- Turtle Point
- Turtle
- Sanggah
- Muerba

Islands

- Bawah
- Muerba
- Sanggah
- Elang
- Lidi
- Tokong

- Speed Boat
- Seaplane
- Mangrove
- Barrier Island





GUEST SUITES

- 1 - 5 Overwater Suites West
- 6 Beach Suite West
- 7 - 8 2-Bed Infinity Pool Villa
- 9 2-Bed Pool Villa
- 10 Beach Suite West
- 9 - 10 3-Bed Pool Villa
- 11 2-Bed Pool Villa

- 11 - 13 4-Bed Pool Villa
- 12 - 13 2-Bed Infinity Pool Villa
- 14 - 15 Beach Suites West
- 16 - 26 Beach Suites East
- 27 - 32 Overwater Suites East
- 33 - 35 Garden Suites
- 36 Jungle Lodge

ISLAND FACILITIES

- 1 Aura Wellbeing
- 2 Jetty
- 3 Guest Relations
- 4 Grouper Bar
- 5 Tree Tops Restaurant
- 6 The Wallace Library
- 7 Jules Verne Bar
- 8 Infinity Pool

- 9 Six Islands Trading Post
- 10 Belajar Pavilion
- 11 Croquet & Tennis Lawn
- 12 Permaculture Garden
- 13 Staff Village
- 14 Aura Spa
- 15 Activities Centre
- 16 The Boat House



Bawah room rates USD (per night)

Garden Suite	\$1780
Beach Suite	\$2080
Overwater Bungalow	\$2520
Jungle Lodge	\$3480
2-bed Pool Villa	\$4980
3-bed Pool Villa	\$6650
2-bed Infinity Pool Villa	\$4580
4-bed Infinity Pool Villa	\$9160

Buyout rates USD (per night)

Bawah Island \$86,800
Accommodates 78* guests across 39 bedrooms in 36 suites

Elang Private Residence \$21,000
Accommodates 14* guests across 7 bedrooms in 6 lodges

**Additional beds available on request*

Room rates include

- Daily breakfast, lunch and dinner
- Water and land activities
- Daily movement classes
- Room tax and service charge
- Daily spa treatment
- Resort-wide WiFi
- Laundry service

**For more information please contact
our Reservations Team**

reservations@bawahreserve.com

Ph. +65 6970 5482

Whatsapp. +60 11 10547003